



# *Professional Services Procurement Bulletin 2007-11 Knott County*

<b>COUNTY</b>	<i>Knott</i>
<b>ROUTE</b>	<i>KY 1098</i>
<b>DISTRICT</b>	<i>12-Pikeville</i>
<b>ITEM NO</b>	<i>12-1080.00</i>
<b>PROJECT DESCRIPTION</b>	<i>Replace Bridge and Approaches on KY 1098 over Middle Fork of Quicksand (B55)</i>
<b>PROJECT MANAGER</b>	<i>Robin T. Justice</i>
<b>USER DIVISION</b>	<i>Highway Design</i>
<b>APPROXIMATE FEE</b>	<i>\$100,000.00</i>
<b>PROJECT FUNDING</b>	<i>Federal Funds (BRX)</i>
<b>PURPOSE AND NEED</b>	<i>Bridge on KY 1098 over Middle Fork of Quicksand (B55) is Structurally Deficient (SR=49.0)</i>
<b>PROJECT LENGTH</b>	<i>0.1 mile</i>
<b>METHOD OF DESIGN</b>	<i>The selected consultant shall utilize the CADD Standards for Highway Plans (version 2.08) policy in the development of the Highway Plans.</i>
<b>DBE REQUIREMENT</b>	<i>None</i>

<b>SCOPE</b>	<i>The selected consultant will provide engineering services for preliminary and final roadway design, including any surveying, drainage design, right of way plans, construction plans, traffic control plans, erosion control and cost estimates.</i>
<b>SPECIAL INSTRUCTIONS</b>	<i>None</i>
<b>AVAILABLE STUDIES</b>	<i>None</i>
<b>PHOTOGRAMMETRIC SERVICES</b>	<i>The selected consultant will field survey the project.</i>
<b>STRUCTURE DESIGN</b>	<i>The selected consultant shall do the necessary engineering services to determine the preliminary sizes of the bridges and other drainage structures. Structure design will be performed by Department. Prequalification in the area of structure design is not required to be identified in the consultant's Response to Announcement.</i>
<b>GEOTECHNICAL SERVICES</b>	<i>Department</i>
<b>TRAFFIC</b>	<i>Traffic projections and related information will be provided by the Department.</i>
<b>ENVIRONMENTAL</b>	<i>The Department will prepare the appropriate environmental document.</i>
<b>UTILITY DESIGN</b>	<i>The selected consultant may be requested to provide utility related services for this project, which may include construction inspection.</i>
<b>MAP</b>	<i><u>Static Map</u> <u>Interactive Map</u></i>
<b>PREQUALIFICATION REQUIREMENTS</b>	
<b><u>ROADWAY DESIGN</u></b>	<ul style="list-style-type: none"> <li>• <i>Rural Roadway Design &lt;\$250,000</i></li> <li>• <i>Surveying</i></li> </ul>

*PROJECT SCHEDULE & MILESTONES*

<i>RESPONSE DATE</i>	<i>July 10, 2007 4:30 p.m. (Frankfort Time)</i>
<i>SELECTION COMMITTEE DATE MEETING</i>	<i>August 1, 2007</i>
<i>PRE-DESIGN CONFERENCE</i>	<i>August 15, 2007</i>
<i>TENTATIVE DEADLINE FOR CONSULTANT FEE PROPOSAL</i>	<i>September 12, 2007</i>
<i>CONTRACT NEGOTIATIONS</i>	<i>October 1, 2007</i>
<i>NOTICE TO PROCEED</i>	<i>December 1, 2007</i>
<i>PRELIMINARY LINE &amp; GRADE INSPECTION</i>	<i>August 1, 2008</i>
<i>JOINT INSPECTION</i>	<i>September 1, 2008</i>
<i>RIGHT OF WAY PLANS</i>	<i>December 1, 2008</i>
<i>FINAL PLANS</i>	<i>June 1, 2009</i>

*The selected consultant is expected to meet the scheduled milestone dates*

## *EVALUATION FACTORS*

- 1. Relative experience of consultant personnel assigned to project team with highway projects for KYTC and/or for federal, local or other state governmental agencies. (10 points)*
- 2. Capacity to comply with project schedule. (10 points)*
- 3. Past record of performance on projects of similar type and complexity. (10 points)*
- 4. Project approach and proposed procedures to accomplish the services for the project. (10 points)*
- 5. Consultant's Kentucky office where work is to be performed. (2 points)*

*75% - 100% of work accomplished in Kentucky offices - 2 points*

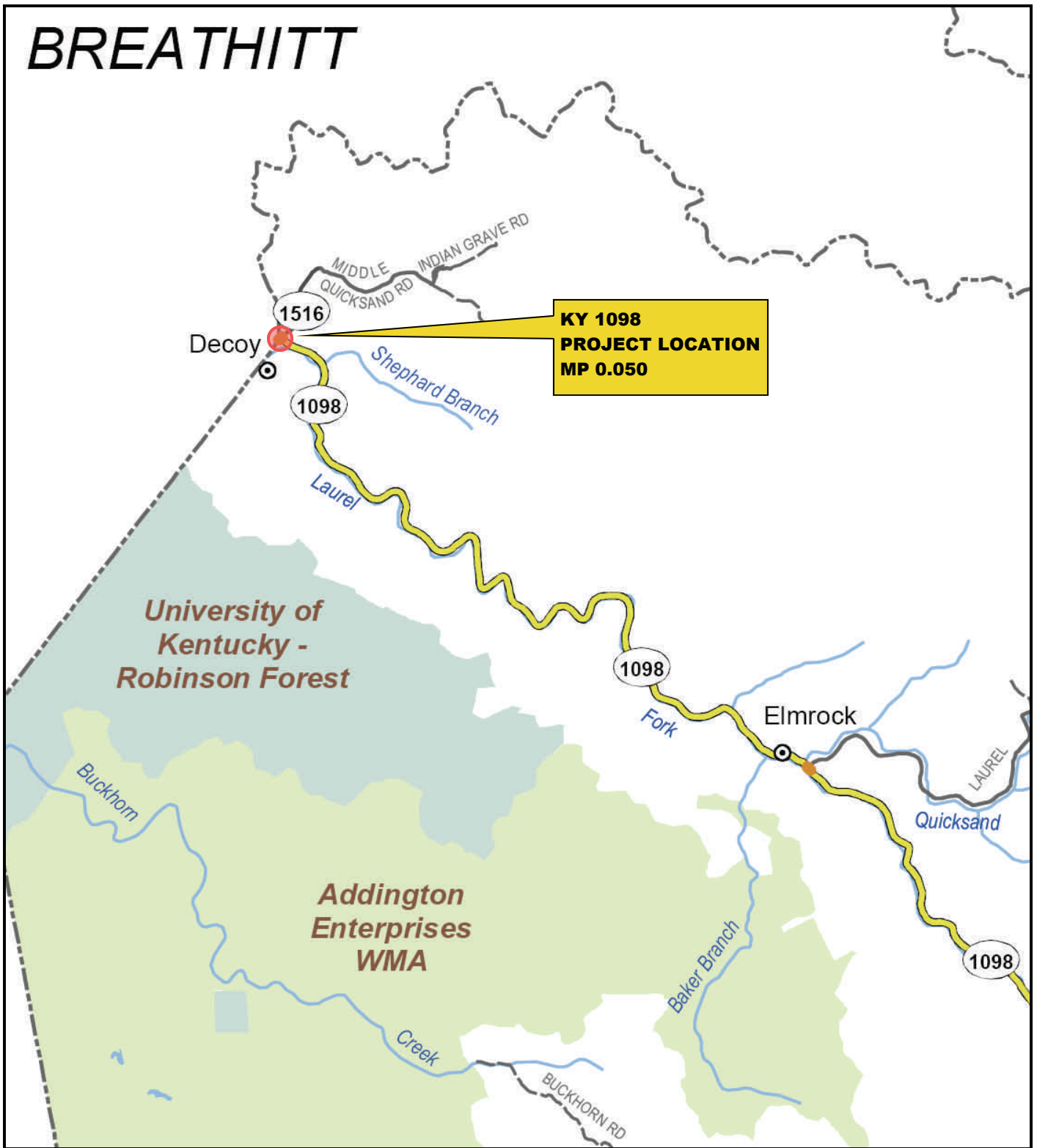
*26% - 74% of work accomplished in Kentucky offices - 1 point*

*0% - 25% of work accomplished in Kentucky offices - 0 points*

## *SELECTION COMMITTEE MEMBERS*

- 1. Robin T. Justice, P.E., User Division*
- 2. Brad Eldridge, P.E., User Division*
- 3. Patty Dunaway, Secretary's Pool*
- 4. Shari Greenwell, Secretary's Pool*
- 5. Edwin Dyer, Governor's Pool*

# BREATHITT

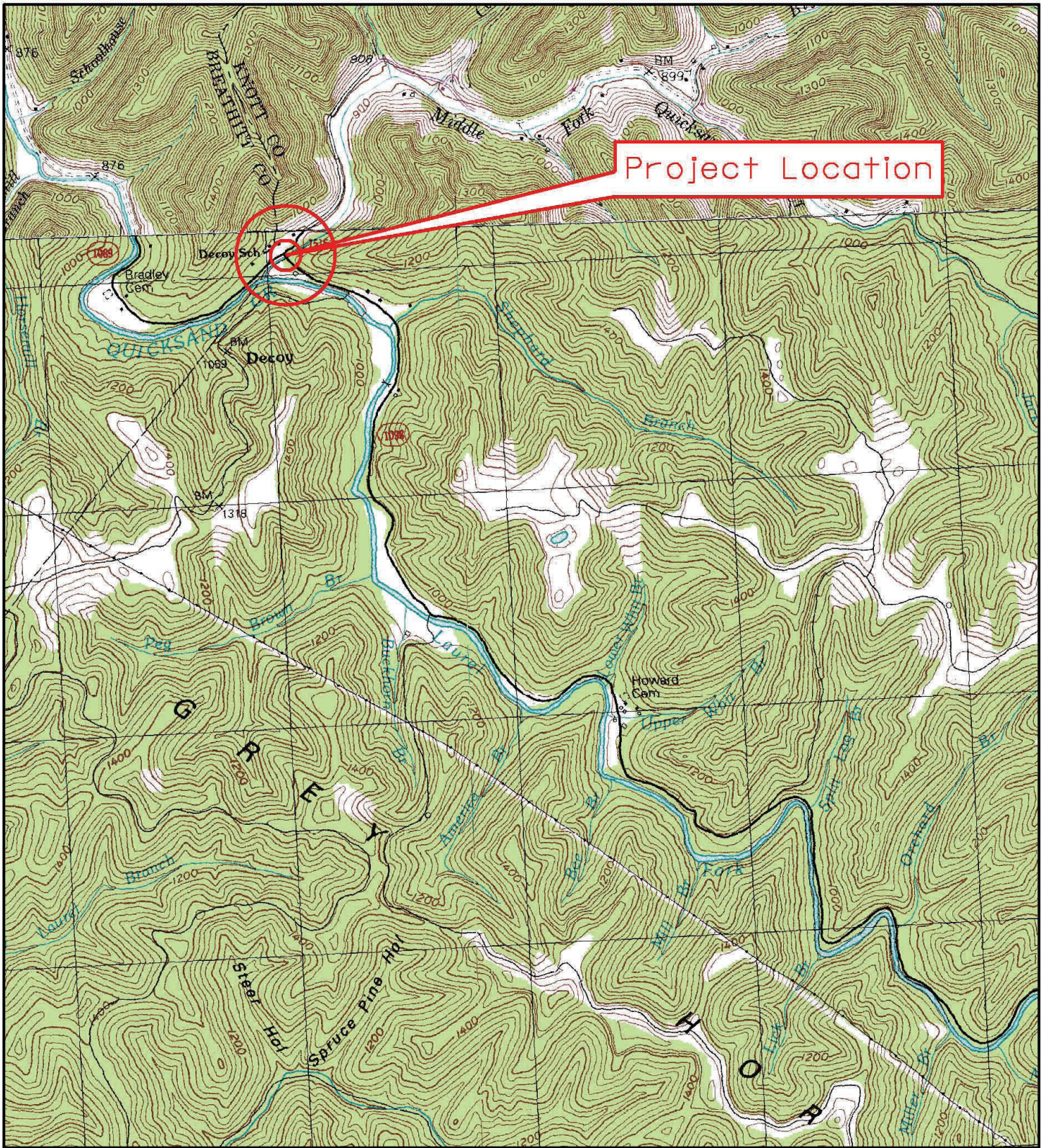


**KY 1098  
PROJECT LOCATION  
MP 0.050**



**Replace Bridge and Approaches on KY 1098  
Over Middle Fork of Quicksand (B55)  
Item 12-1080.00  
Knott County, Kentucky**





SCALE: 1" = 2000'

# LAYOUT MAP

<b>Kentucky Transportation</b>	<b>SITE:</b> Replace Bridge and Approaches on KY-1098 Over Middle Fork of Quicksand			<b>STREAM:</b> Middle Fork	
	<b>COUNTY:</b> Knott	<b>STATE:</b> Kentucky	<b>NEAR:</b> Decoy	<b>ITEM:</b> 12-1080	<b>SHEET:</b> Topo